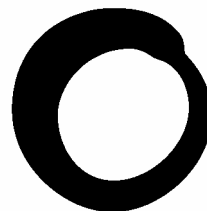


March 2006



**Friends of  
the Earth**

# Action Guide

## Planning and Airport Master Plans Part Three

---

**Friends of the Earth inspires solutions to environmental problems, which make life better for people.**

**Friends of the Earth is:**

- ☐ **the UK's most influential national environmental campaigning organisation**
- ☐ **the most extensive environmental network in the world, with almost one million supporters across five continents and over 60 national organisations worldwide**
- ☐ **a unique network of campaigning local groups, working in over 200 communities throughout England, Wales and Northern Ireland**
- ☐ **dependent on individuals for over 90 per cent of its income.**

**To join or make a donation call us on 0800 581 051**

**Friends of the Earth, 26-28 Underwood Street, London N1 7JQ**

**Tel: 020 7490 1555 Fax: 020 7490 0881 Email: [info@foe.co.uk](mailto:info@foe.co.uk) Website: [www.foe.co.uk](http://www.foe.co.uk)**

Friends of the Earth Limited company number 1012357

♻️ Printed on paper made from 100 per cent post-consumer waste

## Introduction

This Action Guide is the third and probably final in a series published by Friends of the Earth. It provides information and guidance on how to influence your Council's airport planning policy following publication of your local Airport Master Plan (AMP).

As a reminder, the first two action guides covered:-

### **Action Guide Part One**

([http://www.foe.co.uk/resource/action\\_guides/airport\\_master\\_plans.pdf](http://www.foe.co.uk/resource/action_guides/airport_master_plans.pdf))

This looked at the role of Local Development Frameworks (LDF) and how AMPs interact with these important planning documents. It described the process that LDFs should follow in their adoption and key points where local campaigners can influence them.

### **Action Guide Part Two**

([http://www.foe.co.uk/resource/action\\_guides/airport\\_master\\_plans\\_two.pdf](http://www.foe.co.uk/resource/action_guides/airport_master_plans_two.pdf))

This provided information and a template to enable local campaigners to produce an Alternative AMP, providing a vision of sustainable development for your local airport.

All of the Action Guides (including this one) and the alternative Airport Master Plan template can be found at <http://community.foe.co.uk/campaigns/transport/>

This Action Guide:-

- Provides a recap on the AMP process
- Shows how to check where your LDF is up to
- Explains how LDFs interact with other key planning documents;
- Explains how to influence your LDF's policy on your local airport.
- Provides details of valuable resources and contacts.

**If you only do one thing from this Action Guide ... respond to your local authority's draft core strategy (or Area Action Plan if they have one for the airport).**

**Details of how to do this can be found on page 4**

## **Airport Master Plans – how they fit into the planning process**

The Government's 2003 Air Transport White Paper (ATWP) requires airports beyond a certain size (20,000 air transport movements per year by 2030) to produce an AMP.

AMPs are the airport operator's detailed expansion plans up to 2016 (and in brief outline to 2030). In essence, it is the airport's business development strategy.

The ATWP initially gave the airports until the end of 2004 to produce a final plan – this deadline was pushed back to the end of 2005 but no operator had completed their AMPs by this date.

Most airports have now produced their draft AMP for public consultation. Our Community website provides links to all AMPs at:

[http://community.foe.co.uk/campaigns/transport/regional\\_plans](http://community.foe.co.uk/campaigns/transport/regional_plans)

How does this fit in with your local planning process? This is a key question as it underpins the work that you can do as local campaigners to influence how far the AMPs will become integrated into the statutorily binding Local Development Documents that form part of the Local Development Framework.

Many airports will try to get their AMP incorporated into the planning process by having it included in the LDF Core Strategy or an Area Action Plan. The flow-chart in Appendix 1 shows where AMPs fit in the planning process and the key pressure points where local campaigners can influence the process.

This process may take years and local authorities are at different stages – it's important to know where your local authority is up to.

### **Finding out the current status of your LDF**

Every planning authority was required to submit a document called the Local Development Scheme (LDS) to their regional Government office by March 2005. The LDS sets out the documents that will be contained within the LDF and the timetable for their preparation and approval.

Your local authority's LDS should be on their web site, go to:-

<http://www.direct.gov.uk/DI1/Directories/LocalCouncils/fs/en> to find a link to this web site. Check what stage your authority is meant to be at and check for any consultation documents which they may have produced on the website.

However, to quote Robbie Burns, “the best laid plans of mice and men, often go awry” so check with your local authority's planning officers that the schedule set out in the LDS is still being stuck to. They should advise you what stage of development they're currently at and what the next opportunity for public consultation will be.

Once you've established where they're at, check the flow chart in Appendix 1 to establish what you can do to influence the core strategy (or AAP).

### **Planning hierarchy – how is it shaping up**

You need to be aware of the hierarchy of planning documents (see Appendix 2). The following explanation of the various documents may also be useful:

- **National policy:** The 2003 Air Transport White Paper (ATWP) lays down the Government's airport expansion plans. Although it is due to undergo a progress review during 2006, it should currently be applied as national policy. The ATWP can be found at:-  
[http://www.dft.gov.uk/stellent/groups/dft\\_aviation/documents/divisionhomepage/029650.hcsp](http://www.dft.gov.uk/stellent/groups/dft_aviation/documents/divisionhomepage/029650.hcsp)
- **Planning Policy Statements (PPS):** Produced by the Office of the Deputy Prime Minister, these set out the planning frameworks for the UK. There are currently nine PPS's and eighteen Planning Policy Guidance Notes – the main ones you need to be concerned with are:
  - PPS1 – Delivering Sustainable Development  
(<http://www.odpm.gov.uk/index.asp?id=1143804>)
  - PPS11 – Regional Spatial Strategies  
(<http://www.odpm.gov.uk/index.asp?id=1143839>)
  - PPS12 – Local Development Frameworks  
(<http://www.odpm.gov.uk/index.asp?id=1143846>)

All other planning documents should be in conformity with these.

- **Regional Spatial Strategies (RSS):** These are produced by the Regional Assemblies of the nine English regions (including London) and are legally binding. They set out the regional priorities for a variety of topic areas including economic regeneration, transport and housing. They include airport development policy which is binding on LDFs. The regions are working to separate timescales for the development of their RSS. Contact your FOE Regional Campaign Co-ordinator (see Appendix 3 for a list of RCCs) to find out more.

- **Local Development Documents:** Part of the LDF, these key documents are of major concern to local campaigners. LDFs are produced by local authorities and, although bottom of the planning hierarchy, are still legally binding. **Once approved, they are the basis on which planning applications should be decided.** The main documents of issue are the:-
  - Core Strategy (the overriding policy document) and
  - Area Action Plans (AAP)(special documents published alongside the Core Strategy setting out the strategy for a specific area). Some authorities may produce an AAP for their local airport (e.g. Bournemouth) and, although most have not done this at this stage, there is nothing to stop them from doing so at a later date.

There should be conformity throughout the hierarchy and part of the purpose of the Examination in Public of the RSS and the LDF is for the Planning Inspectorate (PI) to ensure this. One of the key ways in which the incorporation of AMPs into the LDF can be challenged is to highlight in your LDF Core Strategy submission how the AMP fails to conform to national policy, PPSs or the RSS.

The PI has produced a set of guidance for local authorities to ensure the soundness of Development Plan Documents. This guidance can be found at [http://www.planning-inspectorate.gov.uk/pins/appeals/local\\_dev/Soundness\\_of\\_DPD.htm#guidance](http://www.planning-inspectorate.gov.uk/pins/appeals/local_dev/Soundness_of_DPD.htm#guidance).

### **How can you influence your LDF?**

We have produced a number of detailed briefings on the new planning system including the “Local Campaigner’s Guide to the new English Planning System” ([http://www.foe.co.uk/resource/guides/new\\_english\\_planning\\_system.pdf](http://www.foe.co.uk/resource/guides/new_english_planning_system.pdf)). This includes a section about submitting responses to your local planning authority. Each local authority should produce a Statement of Community Involvement which will explain how they propose to involve the public in the process.

### **If you do one thing from this Action Guide, respond to the LDF Core Strategy/ Area Action Plan public consultation.**

This response is your ticket into the rest of the LDF process. If you do not respond then you will not be able to take part in the subsequent Public Examination.

If you used our AMP Action Guide Part Two to produce your own Alternative AMP, you can submit this as evidence into the consultation phase.

If you haven’t produced an Alternative AMP then use the AMP Action Guide Part Two to form your submission to the consultation. Your submission should include grounds for objection to the Core Strategy (or grounds for support if the strategy is against airport expansion) and your proposed alternatives.

As a guide to the areas your objections could cover, the main sections in the AMP Action Guide Part Two included:

- Climate change
- Growth predictions
- Economics and jobs
- Surface transport access
- Noise
- Air quality
- Countryside and wildlife

It may be better to cherry-pick two or three of these areas and produce a high-quality objection with robust alternatives than to cover them all with general statements.

Guidance for local authorities on the LDF process is in “Creating Local Development Frameworks: A Companion Guide to PPS12” which is at:-  
[http://www.odpm.gov.uk/pub/863/CreatingLocalDevelopmentFrameworksACompanionGuidetoPPS12PDF949Kb\\_id1143863.pdf](http://www.odpm.gov.uk/pub/863/CreatingLocalDevelopmentFrameworksACompanionGuidetoPPS12PDF949Kb_id1143863.pdf) (Sections 8.5 and 9.4 show how local authorities should handle consultation responses.)

### **What to do – in a nutshell**

In summary, the actions you need to take to respond to the LDF Core Strategy (or Area Action Plan) consultation are:

- Check your Local Development Scheme on your local authority's website to see where they're meant to be up to.
- Ring your local authority to ensure they're keeping to this schedule.
- At the public consultation stage, submit your grounds for objection to (or support for) the policy on airport expansion. Remember to include your alternatives if you're objecting.

If you have more time available then you can:

- Offer to work with your RCC on influencing your RSS Prepare an Alternative Airport Master Plan (see action guide2) – this will then become your submission to the LDF Core Strategy public consultation.
- Start preparing for the Examination in Public into the LDF.

### **Preparing for airport planning inquiries**

Some airports are about to submit planning applications (e.g. Luton) which are likely to be decided through a Public Inquiry. You may want to be involved in challenging these proposals by making representations to the Public Inquiry.

These are presided over by a Planning Inspector, and can be quite challenging so you need to be fully prepared. A campaigner's briefing on involvement in public inquiries will be available towards the end of March 2006 (from <http://www.foe.co.uk/resource/local/planning/resource>). It will provide generic advice and guidance on Public Inquiries.

It is possible that in future we may produce specific resources to help airport campaigners with planning inquiries. This is uncertain because the Government may change the Major Infrastructure Project rules that govern how Planning Inquiries operate. Check with Simon Bowens (contact details below) if you need to know the current position on this.

In the meantime, if there's a chance of a public inquiry at your airport it's vital that you find out as soon as one is called, so keep in constant contact with your planning authority.

Once the inquiry has been called, immediately:-

- ask your planning authority for a copy of the decision letter from ODPM or your regional Government office
- contact the signatory on the letter for information about how the inquiry will be run and what you need to do to participate
- contact the 'programme officer' in your planning authority who should advise you on the timetable and procedures

### **Further help/resources**

FOE and other campaigning organisations have produced a wide variety of briefings, action guides and other information resources on aviation and planning. See Appendix 4 for a reasonably comprehensive list of these.

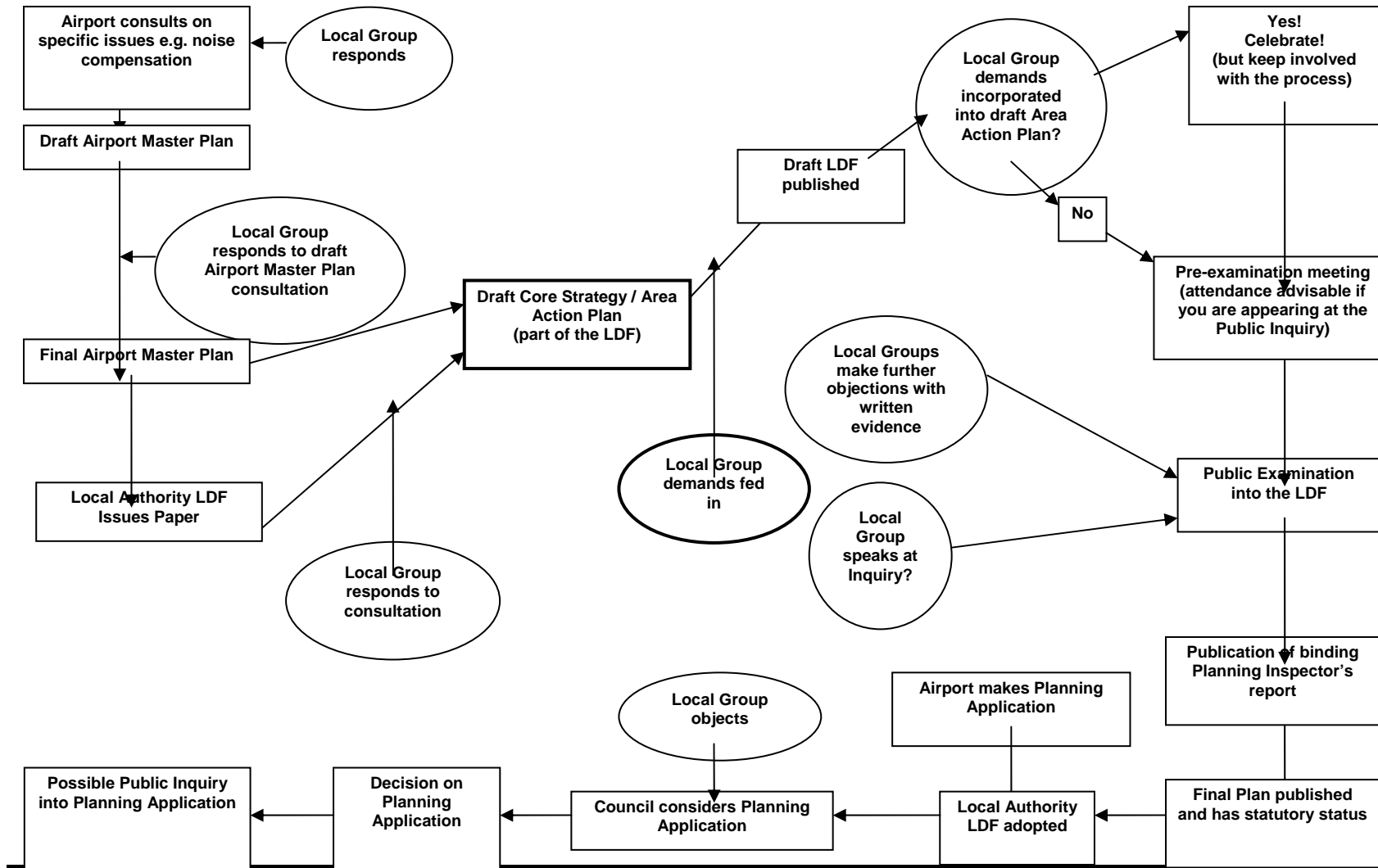
If you can't find the information you need, or you would like printed copies of any of the documents referred to in this Action Guide, contact the Aviation Campaign team at FOE. The contact person is:

Simon Bowens  
Friends of the Earth  
74 Kirkgate  
Leeds  
LS2 7DJ

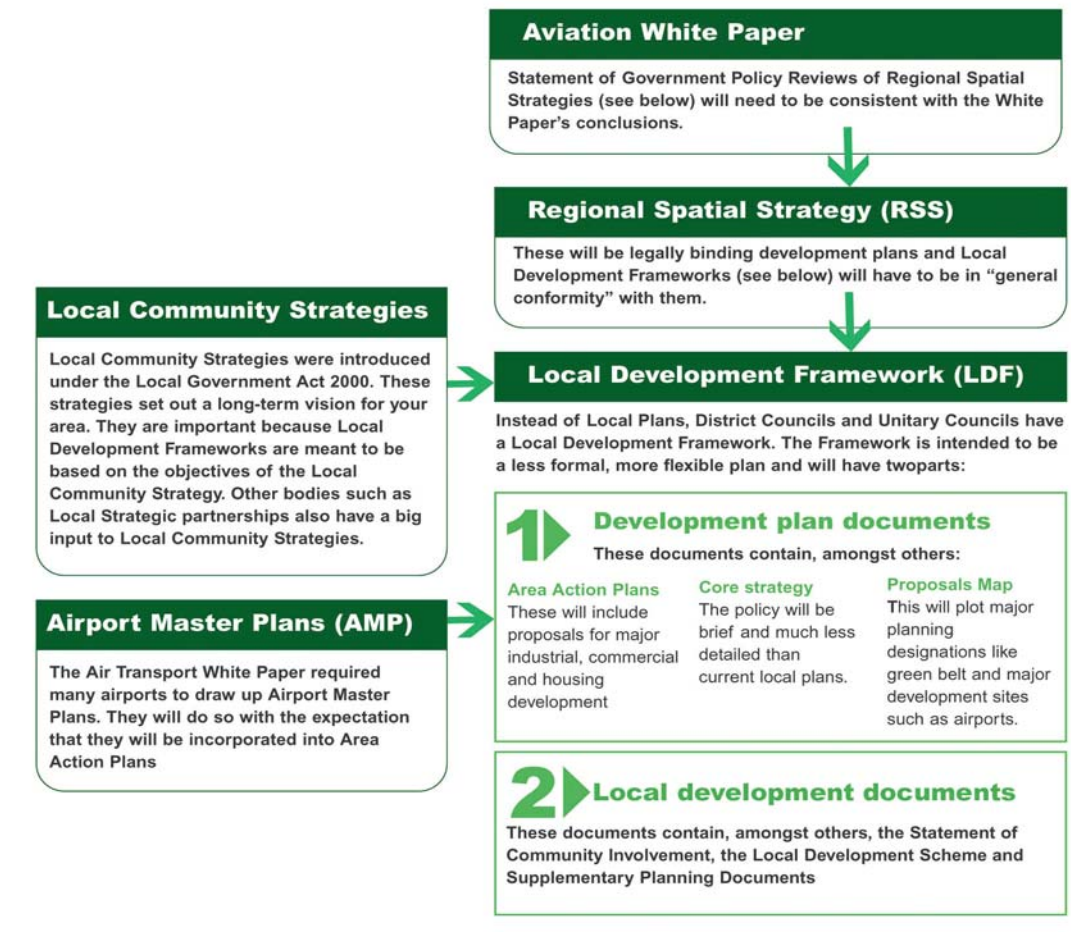
Tel: 0113 2428151  
Email: [simonbw@foe.co.uk](mailto:simonbw@foe.co.uk)

Power Up 2006 is a great three-day residential training event for any campaigners involved in influencing the planning process in their community. It will be held in Birmingham from Friday 19<sup>th</sup> to Sunday 21<sup>st</sup> May. More details can be found at <http://community.foe.co.uk/powerup>.

## Appendix 1 – Flow chart of Local Development Framework process



## Appendix 2 – The English planning system and how Airport Master Plans fit in





### **Appendix 3 – Friends of the Earth Regional Campaign Co-ordinators**

#### **North East**

Carole Zagrovic  
Friends of the Earth  
c/o FROG Linc Centre  
24a The Bungalows  
Grangetown  
Middlesbrough  
TS6 7SQ  
Tel: 01642 459171  
E-mail: [carolez@foe.co.uk](mailto:carolez@foe.co.uk)

#### **Yorkshire and the Humber**

Regional Campaigns Coordinator  
Friends of the Earth  
74 Kirkgate  
Leeds LS2 7DJ  
Tel: 0113 242 8150

#### **North West**

Frank Kennedy  
Friends of the Earth  
60 Duke Street  
LIVERPOOL  
L1 5AA  
Tel:- 0151 707 4328  
Fax:- 0151 707 4329  
E-mail:- [frankk@foe.co.uk](mailto:frankk@foe.co.uk)

#### **East of England**

Mary Edwards  
8 Victoria Street  
Littleport  
Cambs  
CB6 1LX  
Tel: 01353 861763  
E-mail: [maryed@foe.co.uk](mailto:maryed@foe.co.uk)

#### **East Midlands**

Callie Lister  
Friends of the Earth  
2nd Floor,  
8 Thurland Street,  
Nottingham,  
NG1 3DR  
Tel:- 0115 950 6926  
Fax:- 0115 950 6927  
E-mail:- [calliel@foe.co.uk](mailto:calliel@foe.co.uk)

#### **West Midlands**

Chris Crean  
Friends of the Earth  
54-57 Allison Street,  
Digbeth,  
Birmingham,  
B5 5TH  
Tel:- 0121 643 9117  
Fax:- 0121 643 8117  
E-mail:- [chrisc@foe.co.uk](mailto:chrisc@foe.co.uk)

#### **London**

Jenny Bates  
Friends of the Earth  
26-28 Underwood St  
London N1 7JQ  
Tel:- 020 7490 1555  
Fax:- 020 7490 0881  
E-mail:- [jennyb@foe.co.uk](mailto:jennyb@foe.co.uk)

#### **South East**

Brenda Pollack  
Friends of the Earth  
39-41 Surrey Street,  
Brighton,  
BN1 3PB  
Tel:- 01273 766640  
Fax:- 01273 766 678  
E-mail:- [brendap@foe.co.uk](mailto:brendap@foe.co.uk)

#### **South West**

Mike Birkin  
Friends of the Earth  
10-12 Picton Street,  
Bristol  
BS6 5QA  
Tel:- 0117 9420128  
Fax:- 0117 942 0164  
E-mail:- [mikeb@foe.co.uk](mailto:mikeb@foe.co.uk)

## **Appendix 4 – Information resources on aviation and planning**

### **Aviation (do we really need all this stuff that's been in previous action guides?)**

Tackling climate change in England's regions - the role of regional spatial strategies

[http://www.foe.co.uk/resource/briefings/tackling\\_climate\\_change\\_in.pdf](http://www.foe.co.uk/resource/briefings/tackling_climate_change_in.pdf)

Includes an Annex specifically on how airport expansion threatens regional climate policies.

Why airport expansion is bad for regional economies

[http://www.foe.co.uk/resource/briefings/regional\\_tourism\\_deficit.pdf](http://www.foe.co.uk/resource/briefings/regional_tourism_deficit.pdf)

How the growth of aviation is damaging the UK's regional tourism and economies

Aviation and the economy

[http://www.foe.co.uk/resource/briefings/aviation\\_and\\_the\\_economy.pdf](http://www.foe.co.uk/resource/briefings/aviation_and_the_economy.pdf)

This briefing undermines the economic claims of the aviation industry

Growth Scenarios for EU & UK Aviation: Contradictions with climate policy

[http://www.foe.co.uk/resource/reports/aviation\\_tyndall\\_research.pdf](http://www.foe.co.uk/resource/reports/aviation_tyndall_research.pdf)

A report produced for Friends of the Earth by the internationally renowned Tyndall Centre for Climate Change Research. It shows how the proposed airport expansion is incompatible with the Government's climate change targets.

A summary of this report is at:

[http://www.foe.co.uk/resource/reports/aviation\\_tyndall\\_summary.pdf](http://www.foe.co.uk/resource/reports/aviation_tyndall_summary.pdf)

Airport Master Plans: The risks and potential pitfalls for local authorities

[http://www.foe.co.uk/resource/briefings/airport\\_master\\_plans0.pdf](http://www.foe.co.uk/resource/briefings/airport_master_plans0.pdf)

This shows the dangers for local authorities of incorporating AMPs into their Local Development Documents and how these might compromise their sustainable development obligations.

Airport Master Plans Action Guides Parts One and Two

See page 2 for further details and web links.

### **Planning**

A Local Campaigners Guide to the New English Planning System

[http://www.foe.co.uk/resource/guides/new\\_english\\_planning\\_system.pdf](http://www.foe.co.uk/resource/guides/new_english_planning_system.pdf)

A guide showing how the system works and how you can get involved.

A guide to Local Development Schemes

[http://www.foe.co.uk/resource/briefings/a\\_guide\\_to\\_local\\_developme.pdf](http://www.foe.co.uk/resource/briefings/a_guide_to_local_developme.pdf)

A guide to how and when local authorities write the documents which go to make up Local Development Frameworks.

Action Guide 5 - Getting climate change targets into your local development frameworks

[http://community.foe.co.uk/resource/guides/bigask\\_actionpack\\_five.pdf](http://community.foe.co.uk/resource/guides/bigask_actionpack_five.pdf)

Getting targets into the LDF gives you the opportunity to show that airport expansion is incompatible with these targets.

Statements of Community Involvement: A Conformity Checklist

[http://www.foe.co.uk/resource/checklists/sci\\_checklist.pdf](http://www.foe.co.uk/resource/checklists/sci_checklist.pdf)

A checklist to ensure that your local authority is applying the best practice in ensuring local community participation in the development of their LDF.

Strategic environmental assessment (SEA): a campaigner's guide

[http://www.foe.co.uk/resource/guides/strategic\\_env\\_assessment.pdf](http://www.foe.co.uk/resource/guides/strategic_env_assessment.pdf)

The SEA system provides important opportunities to understand the environmental impacts of new policies and plans. This guide explains what the SEA directive is all about and how it is used to assess your environment.

Environmental impact assessment (EIA): a campaigner's guide

[http://www.foe.co.uk/resource/guides/environmental\\_impact\\_asses1.pdf](http://www.foe.co.uk/resource/guides/environmental_impact_asses1.pdf)

EIA applies to major development proposals and is supposed to help us understand the potential development effects on the environment. This guide explains how to get to grips with EIA and how to check they are done right.

How to: use your rights in planning applications

[http://community.foe.co.uk/resource/how\\_tos/cyw\\_55\\_planning\\_applications.pdf](http://community.foe.co.uk/resource/how_tos/cyw_55_planning_applications.pdf)

There are key steps you can take to influence the planning application process in your favour. This 'how to' guide outlines the process and explains how to make best use of your rights when objecting to an application.

### **Other campaign organisations**

Aviation Environment Federation (AEF)

Broken Wharf House

2 Broken Wharf

London

EC4V 3DT

Tel:- 020 7248 2223

Fax:- 020 7329 8160

[www.aef.org.uk](http://www.aef.org.uk)

Airport Watch

Broken Wharf House

2 Broken Wharf

London

EC4V 3DT

Tel: 0207 2482227

Fax: 020 7329 8159

[www.airportwatch.org.uk](http://www.airportwatch.org.uk)

Environmental Law Foundation

Suite 309

16 Baldwins Gardens

Hatton Square

London EC1N 7RJ

Tel: 020 7404 1030

Fax: 020 7404 1032

[www.elflaw.org/](http://www.elflaw.org/)

Town and Country Planning Association

17 Carlton House Terrace

London

SW1Y 5AS

Tel: (020) 7930 8903

Fax: (020) 7930 3280

[www.tcpa.org.uk/](http://www.tcpa.org.uk/)