

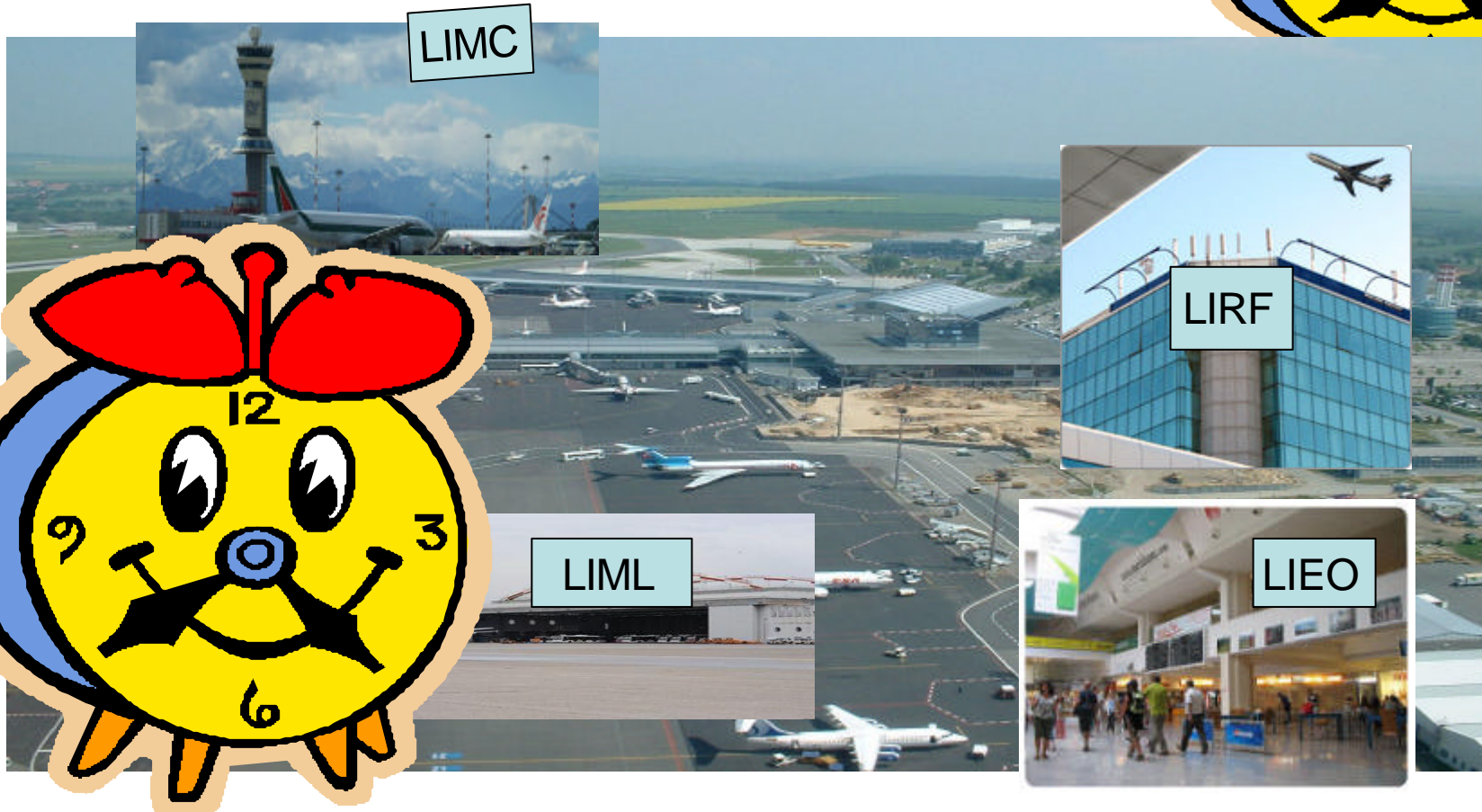
TIME TABLE & TAKEOFF TIME: UN OSSIMORO

**Window Watch Without Wonder:Work,
Words, Why?**

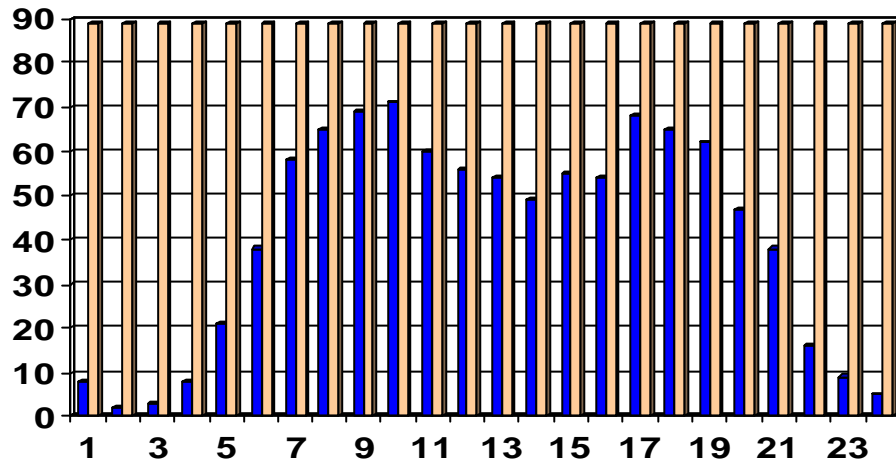
By ATC BATTER



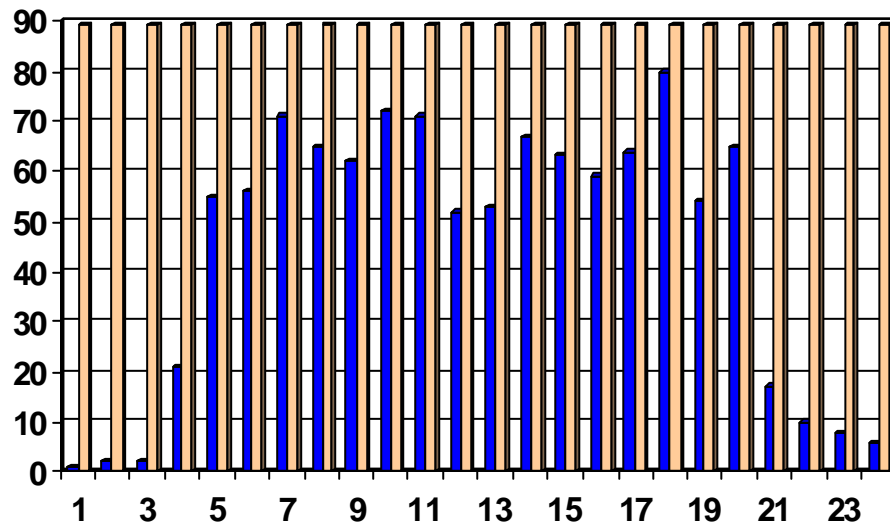
Window Watch.....



Arrivi & Partenze LIRF



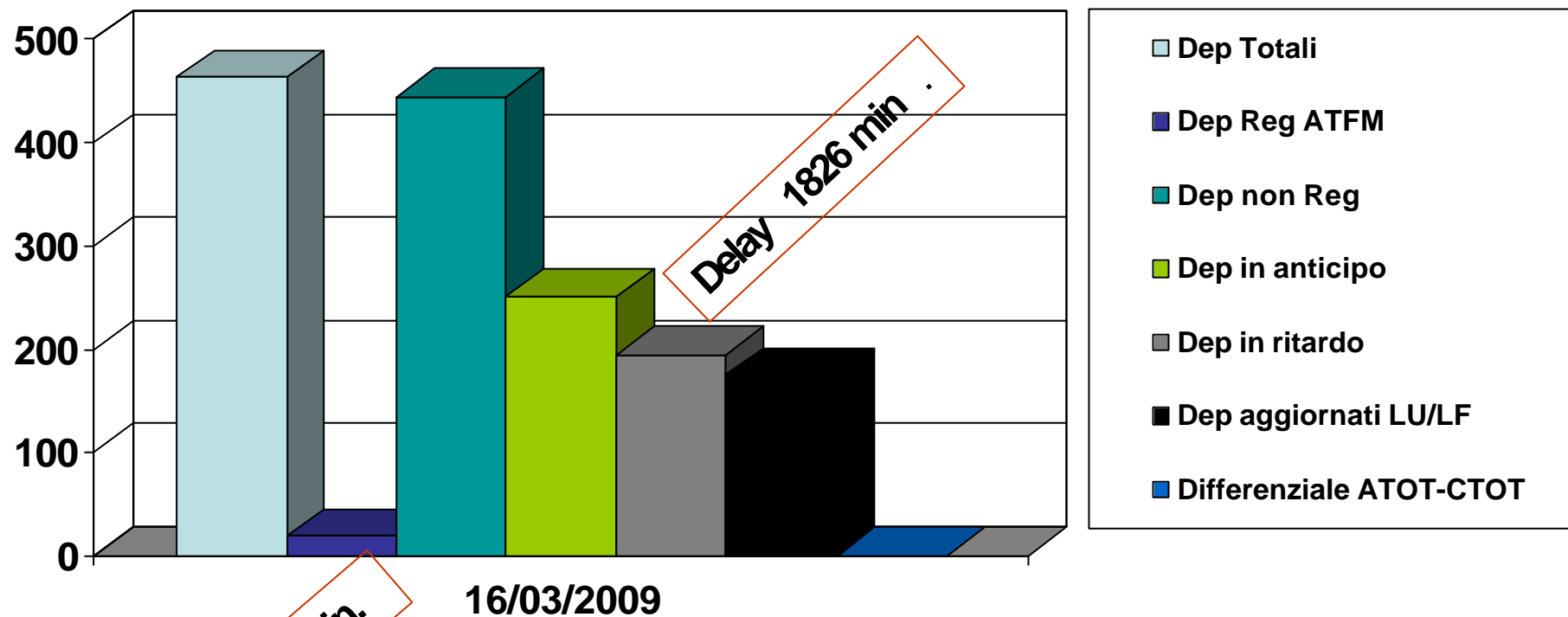
■ Arr. Dep. 16/03/09
■ Capacity Arr/Dep



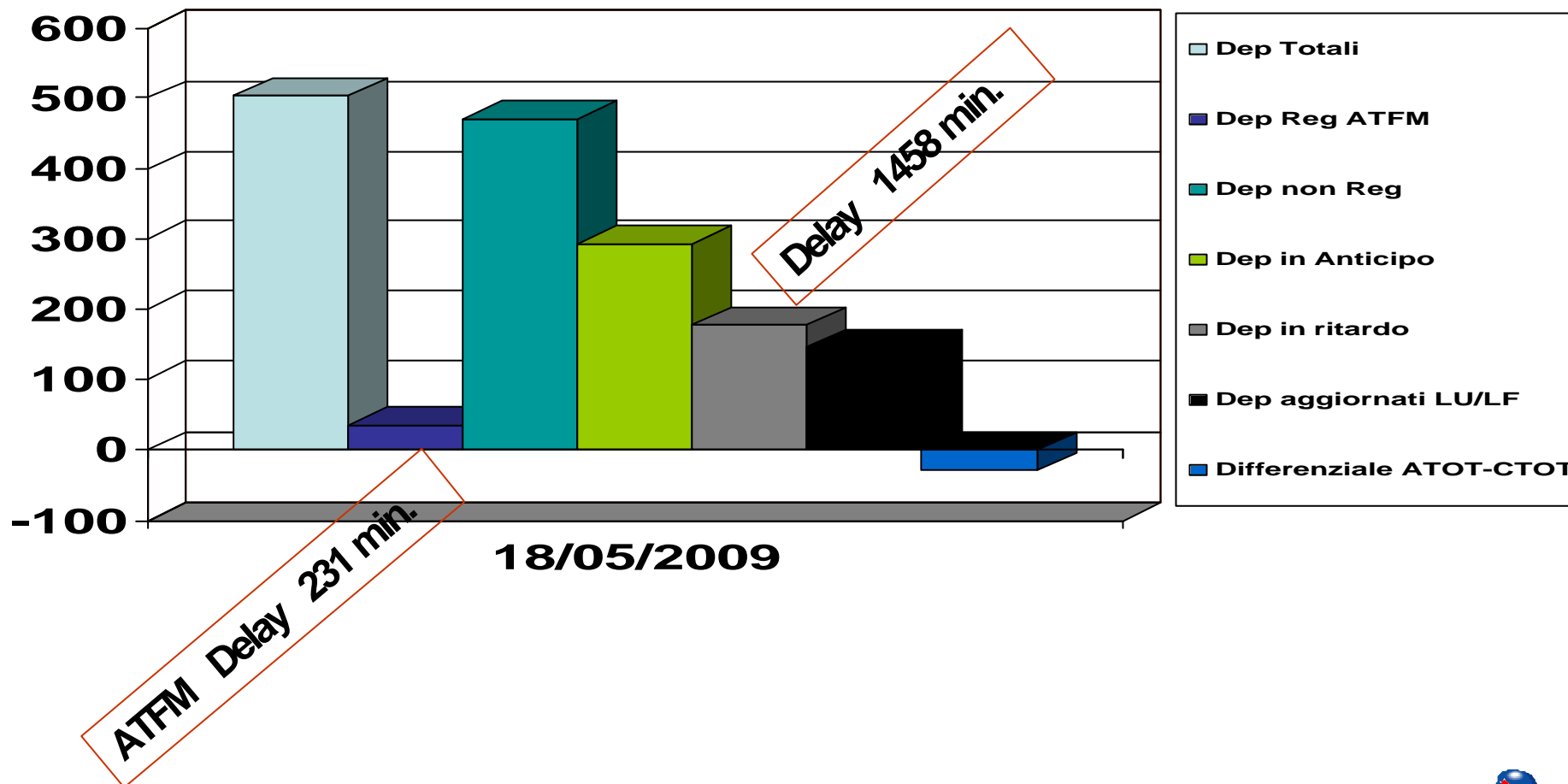
■ Arr. Dep. 18/05/09
■ Capacity Arr/Dep



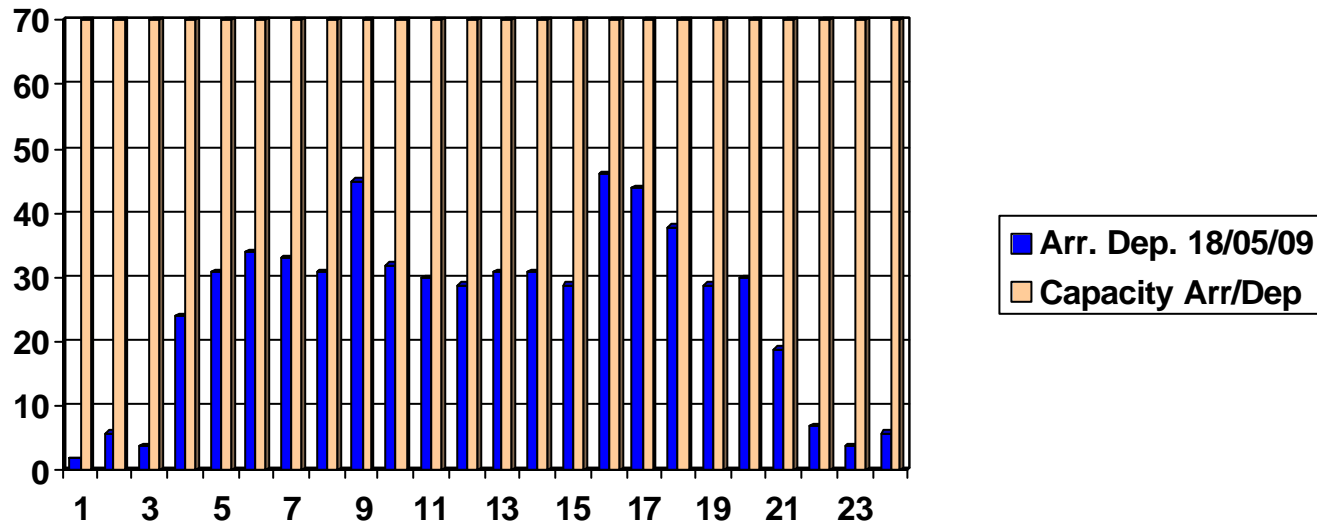
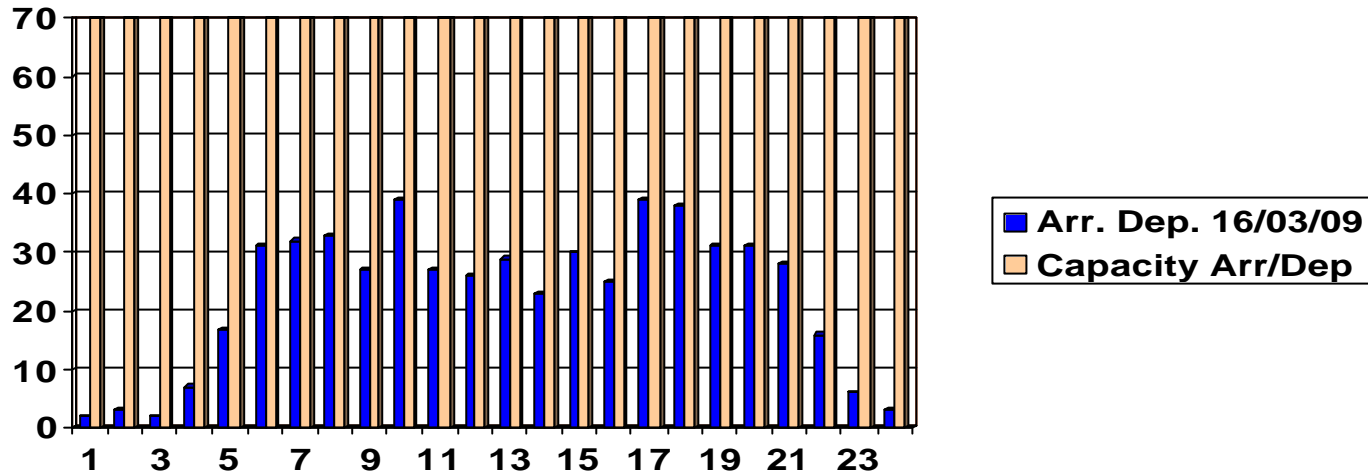
Analitico Partenze LIRF 16/3/09



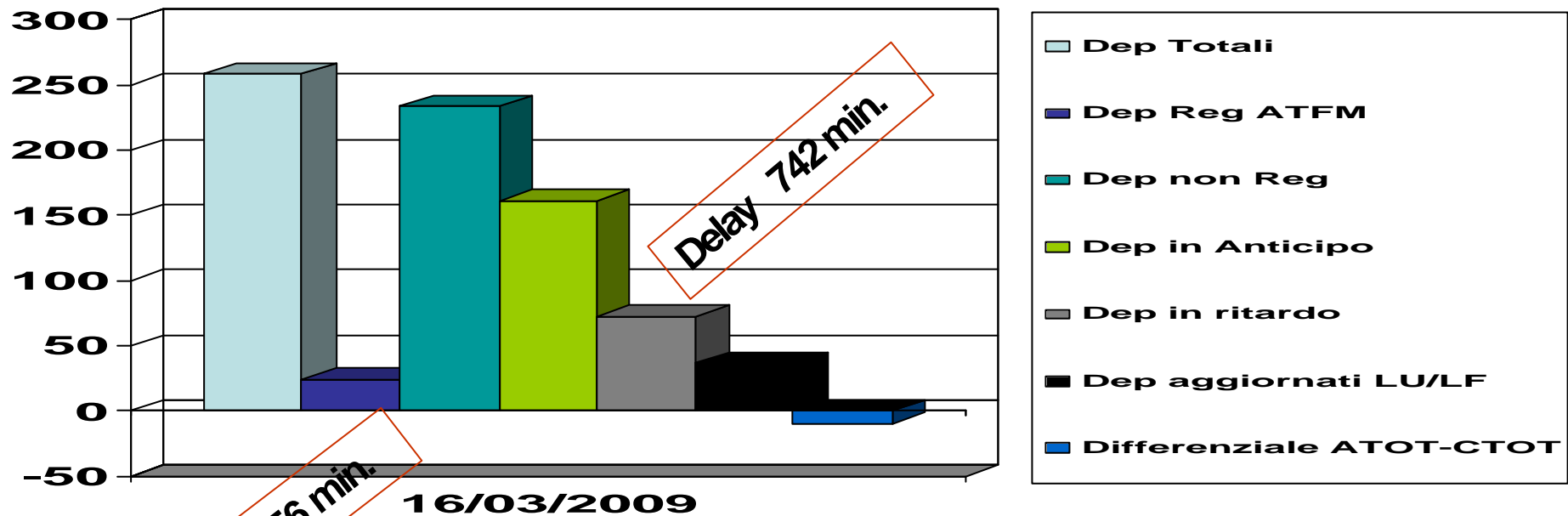
Analitico Partenze LIRF 18/5/09



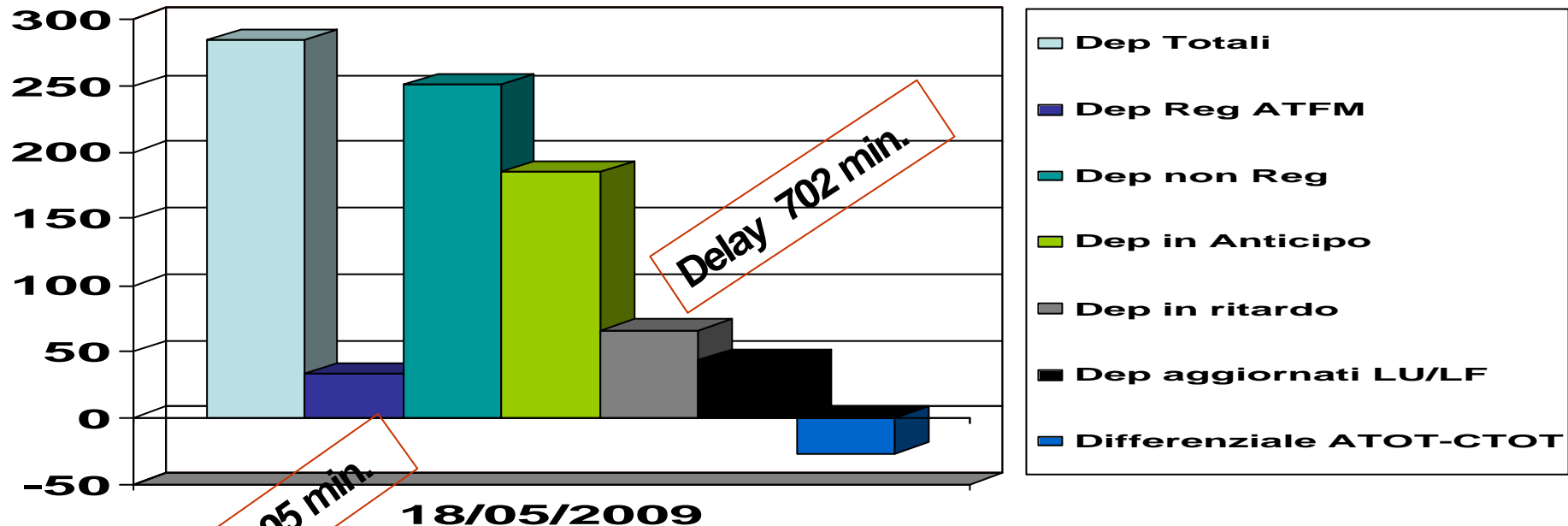
Arrivi & Partenze LIMC



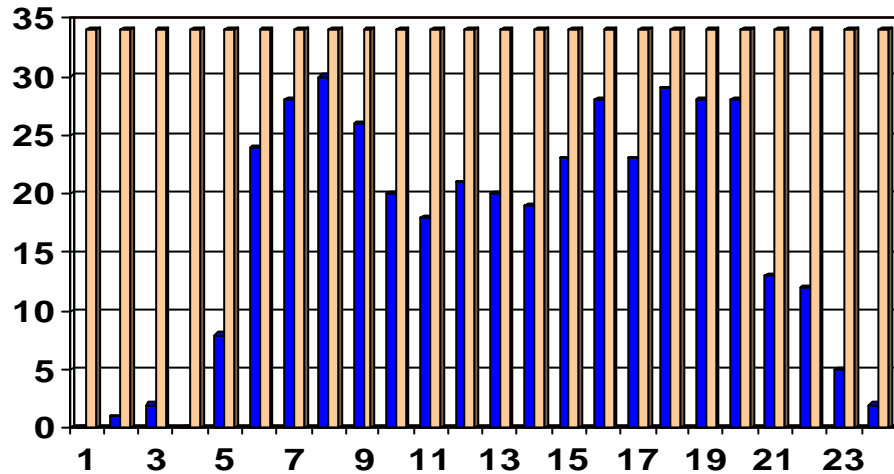
Analitico Partenze LIMC 16/3/09



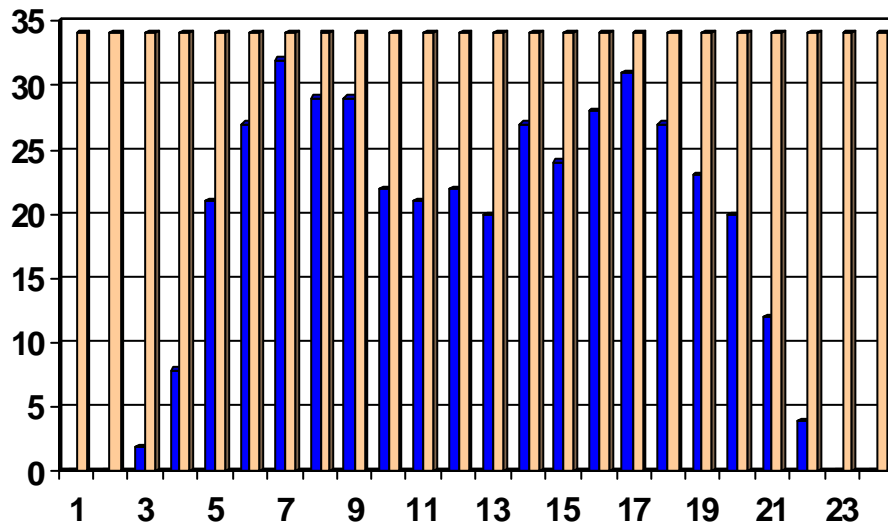
Analitico Partenze LIMC 18/5/09



Arrivi & Partenze LIML



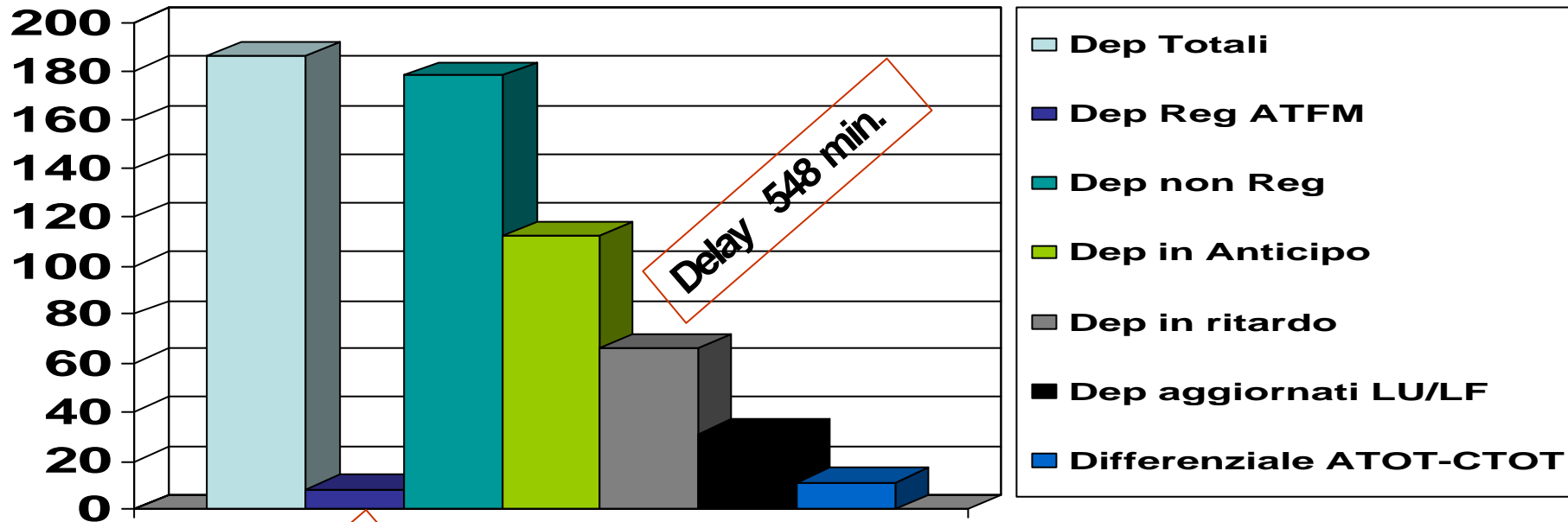
■ Arr. Dep. 16/03/09
■ Capacity Arr/Dep



■ Arr. Dep. 18/05/09
■ Capacity Arr/Dep



Analitico Partenze LIML 16/3/09



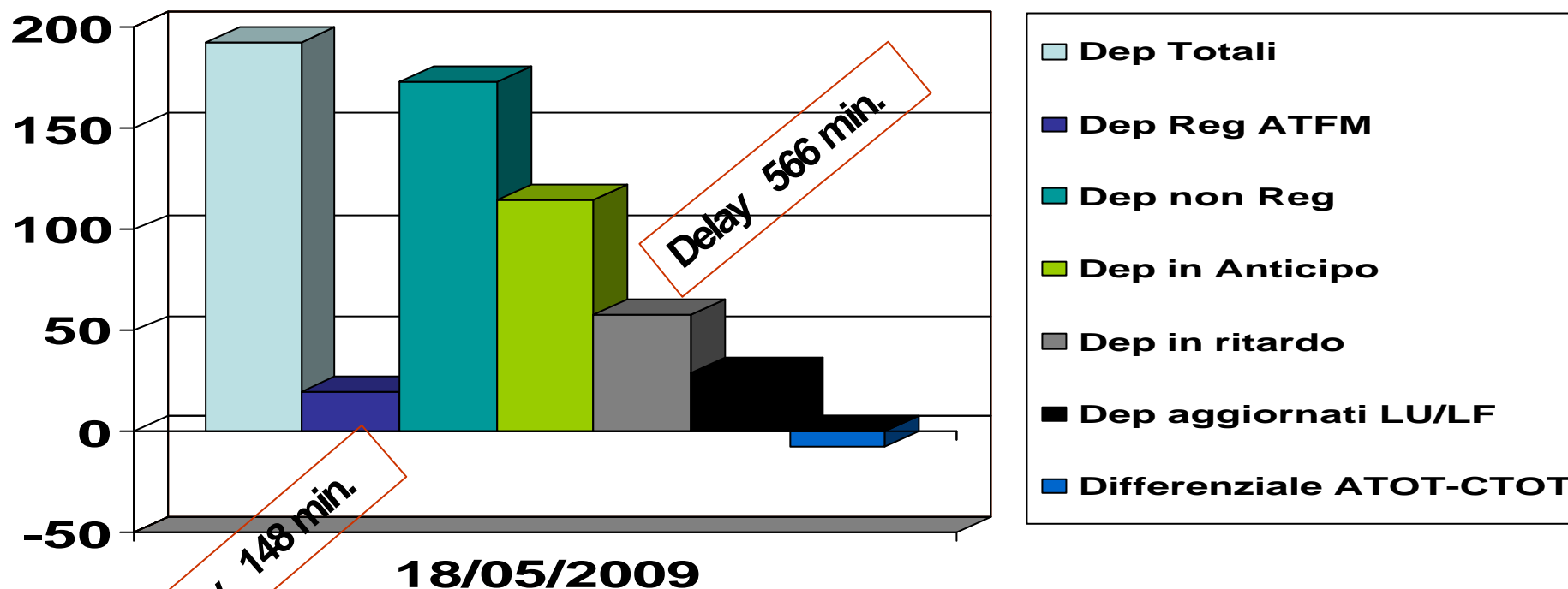
ATFM Delay 52 min,

16/03/2009

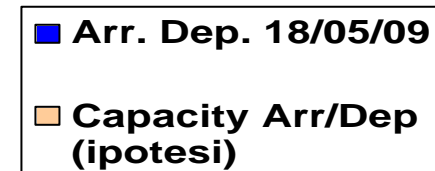
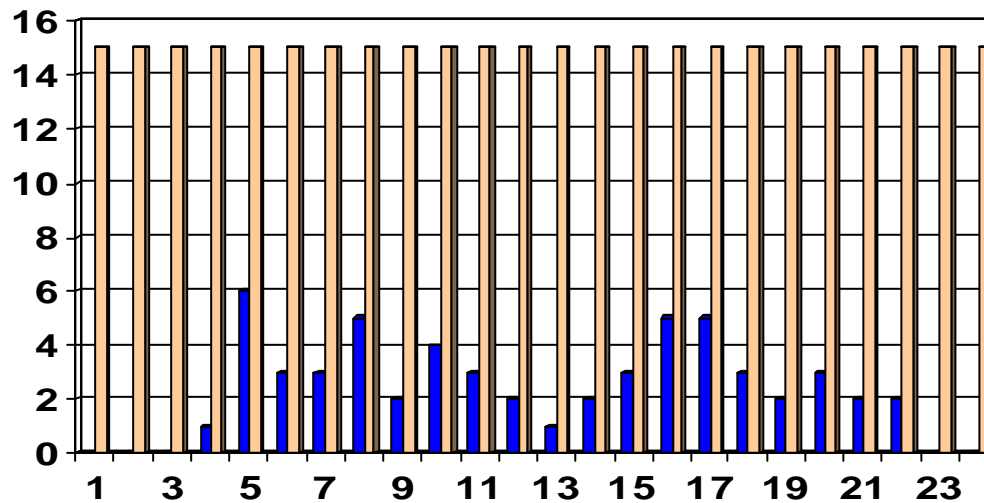
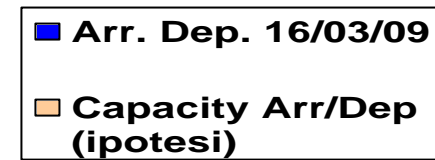
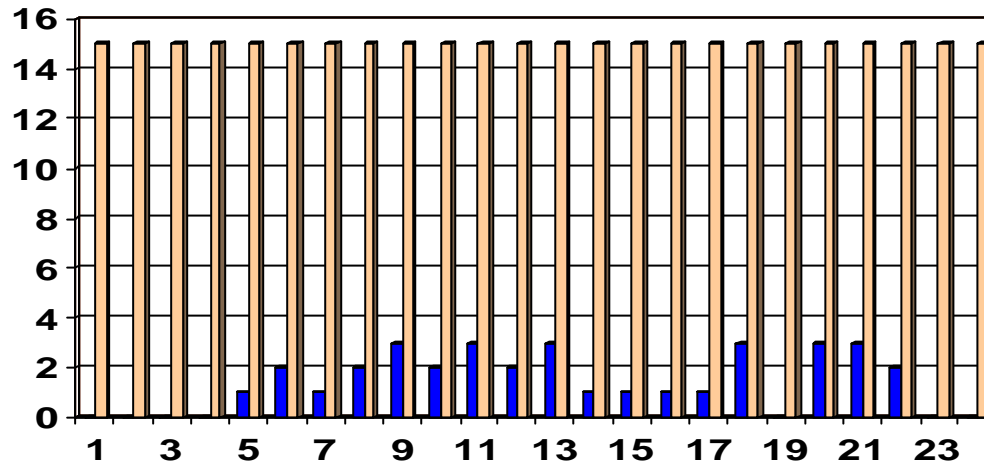
Delay 548 min.



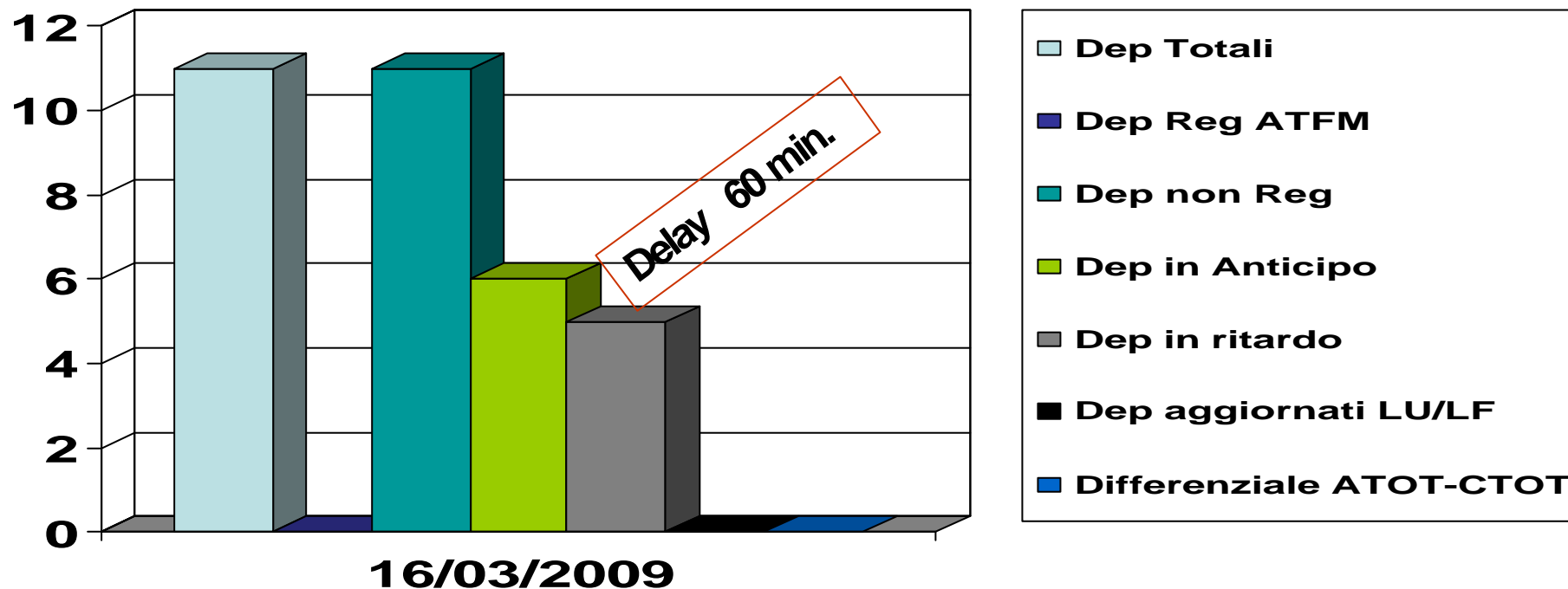
Analitico Partenze LIML 18/5/09



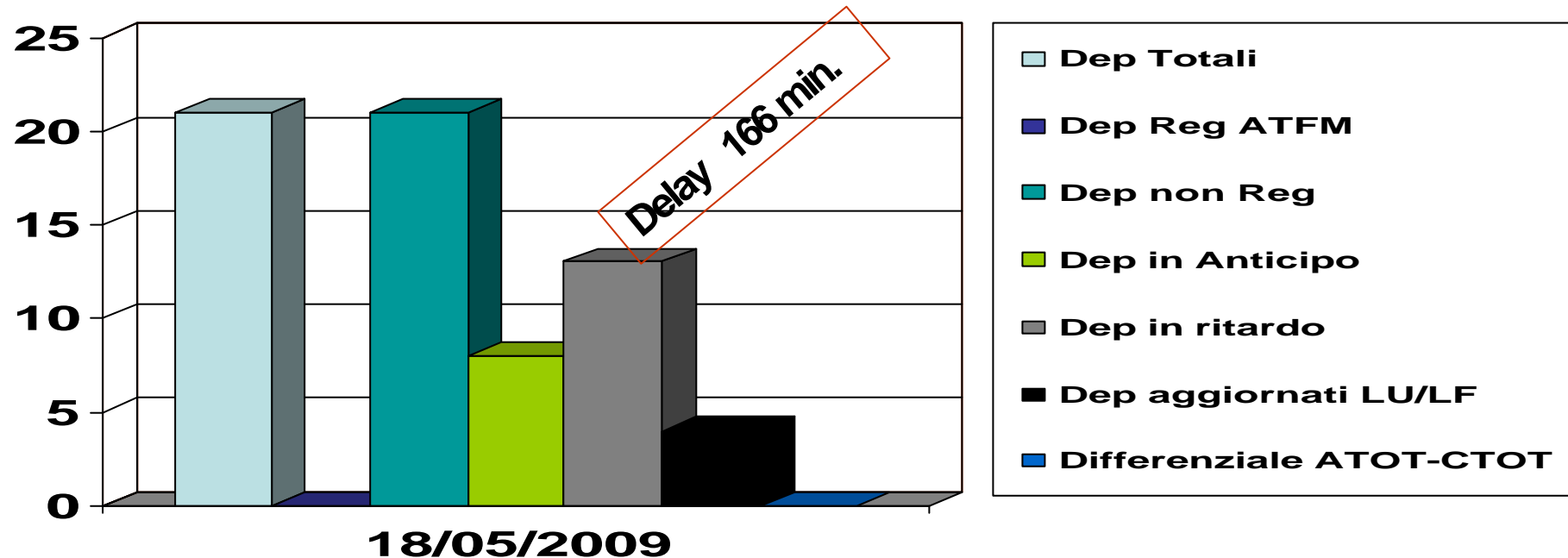
Arrivi & Partenze LIEO



Analitico Partenze LIEO 16/3/09



Analitico Partenze LIEO 18/5/09



Operatività

- **Ambiente operativo:**
- **a)** le azioni ATFM su aree internazionali non determinano un impatto particolarmente significativo
- **b)** assenza di azioni ATFM su area nazionale
- **c)** buone condizioni meteo
- **d)** operatività ATC / TLC / RDR / ATM senza disfunzioni



Valutazioni

- Contesto ambientale favorevole a ritenere plausibili le azioni operative dipendenti da:
 - **a)** preparazione aeromobile (tecnica, handling. ecc.)
 - **b)** controlli sicurezza
 - **c)** ritardo presentazione passeggeri imbarco
 - **d)** problematiche tecniche last minute
 - **e)** disfunzioni occasionali ed estemporanee
 - **f)**ect.ect.
 -
-a fronte di una completa operatività ATCS



".....window ?"



- *aprire la finestra è utile.*



Nota: rife dati Archive Eurocontrol CFMU/ATFM occasionalmente visionati



Domande ? Dubbi ?

• Grazie per l'attenzione

By ATC BATTER



ATC Batter 2009
www.aerohabitat.eu